

1 2 3 4 5 6 7 8

ORDERING INFORMATION

SERIES NO. J0201 TYPE C CAP 4H=2.90mm

PRODUCTS HIGH PIN NO. CONTACT PLATING ME PLATING ATTACHMENT PACKING TYPE MYLAR OR CAP

12 XX XX XX XX 1 XX X

24 20:DULL PURE TIN 30:BRIGHT PURE TIN

30 30:BRIGHT PURE TIN 1/4" OVER NICKLE 0W/0 PEG

40 51:SELECTION GOLD 4μ OVER NICKLE 1:WITH PEG

56:SELECTION GOLD 15μ OVER NICKLE 20:TAP&REEL (16mm B2 WITH LEFT PEG)

61:GOLD FLASH 1/4" 21:TAP&REEL (24mmB2 WITH LEFT PEG)

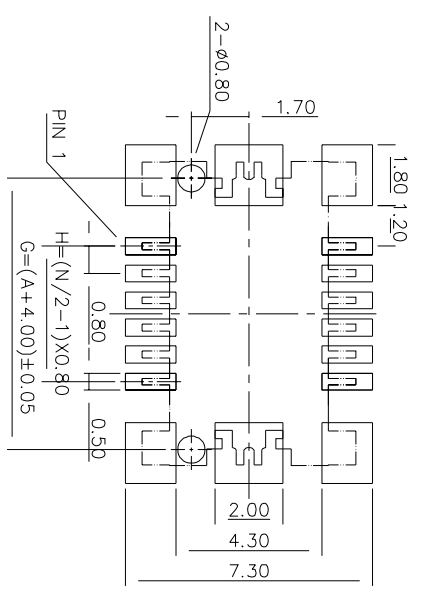
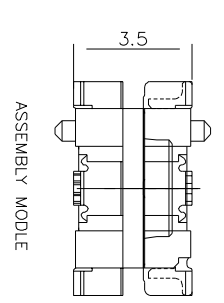
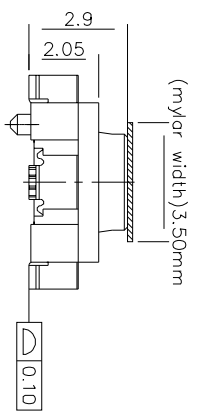
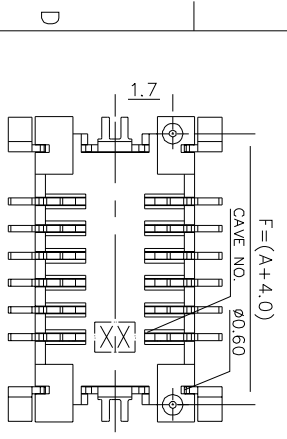
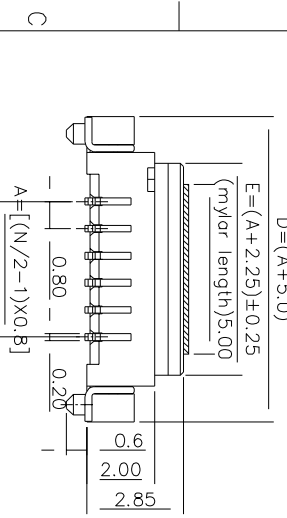
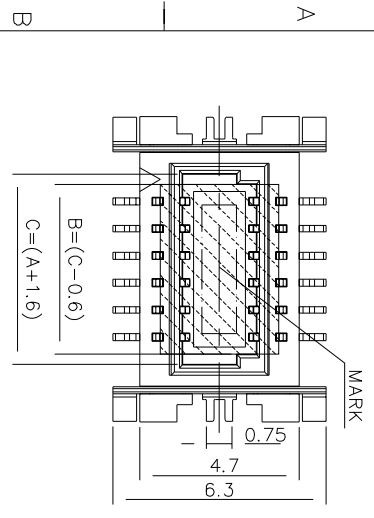
63:GOLD FLASH 4μ 22:TAP&REEL (32mmB2)

65:GOLD FLASH 10μ 25:TAP&REEL (24mmB2 WITH RIGHT PEG)

N/W/O MYLAR OR CAP
1-WITH MYLAR
5.0X3.5(2.40H)
4-WITH MYLAR

MATERIAL
INSULATOR: GLASS FILLED THERMO-PLASTIC. UL 94V-0
CONTACT: JIS C5191 R-H
THIS PART DON'T CONTAIN ANY SUBSTANCES WHICH ARE SPECIFIED IN SS-00259

SPECIFICATION
CURRENT RATING: 0.5A 50V AC/DC
CONTACT RESISTANCE: 40 mΩ MAX
INSULATION RESISTANCE: 500MΩ MIN AT 500V DC
OPERATING TEMPERATURE RANGE: -20°C TO +85°C



DIM	A	B	C	D	E	F
12	4.0	4.9	6.3	9.0	5.5	8.0
20	7.2	8.1	9.5	12.2	8.7	11.2
24	8.8	9.7	11.1	13.8	10.3	12.8
30	11.2	12.1	13.5	16.2	12.7	15.2
40	15.2	16.1	17.5	20.2	16.7	19.2

PRODUCT ASSEMBLY HIGH	PINUG. PART NO.	CAP. PART NO.
H=3.0mm	J0201-P1	J0201-C1
H=3.5mm	J0201-P1	J0201-C4
H=4.4mm	J0201-P1	J0201-C3
H=5.0mm	J0201-P1	J0201-C2
H=5.5mm	J0201-P1	J0201-C5
H=7.0mm	J0201-P1	J0201-C6
H=11.0mm	J0201-PF	J0201-CE
H=15.0mm	J0201-PF	J0201-CE

INTENDED USE
CUSTOMER TOLERANCES

0.0 ±0.30
LINEAR 0.00±0.20
ANGLES ±3°

TITLE	PART NO.	CHKD	DATE
CAP ASSEMBLY (MATING HEIGHT 2.90mm WITH BOSS) 0.8mm PITCH BTB CONN.	J0201-C4XXXXXX1XX	Mark	
	J0201-C4XXXXXX1XX	Steve	
		Ting	
			08/06/09'

SCALE 1:1 SHEET 1/1 REV A UNIN mm

JJP Jen Jia Precision Co., LTD.

1 2 3 4 5 6 7 8