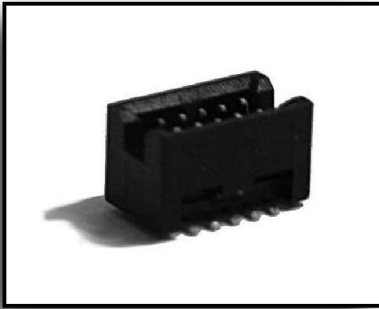
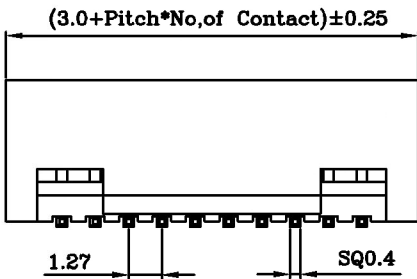
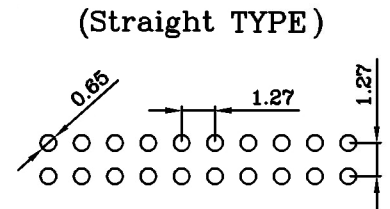
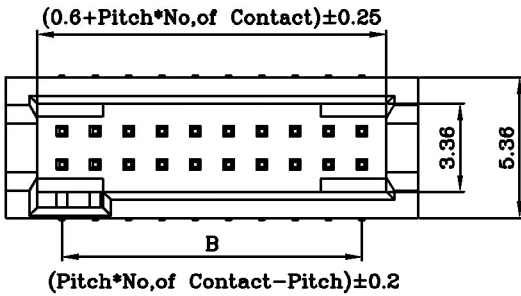


1.27x1.27mm(0.05"x0.05") Shrouded Header, Straight or SMT Dual Row 10 to 70 Contacts

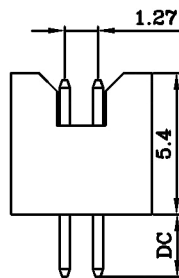
● SPECIFICATIONS ●



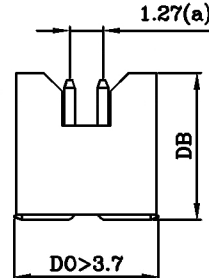
Current Rating:	1.0A@80°C ambient
Operating Temp Range:	-40°C to +125°C
Insulator Material:	NYLON-6T(UL94V-0)
Contact Material:	Brass
Max Processing Temp:	260°C for 10 seconds
Plating:	Standard Plating G2
Unit:	mm
Unspecified Tolerance:	±0.2



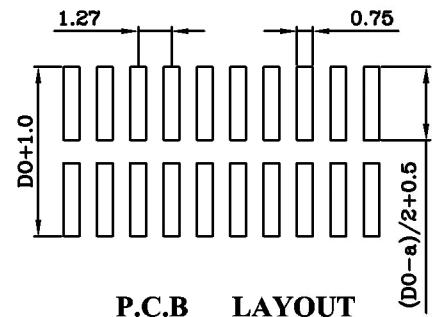
Straight



SMT



(SMT TYPE)



P.C.B LAYOUT

The length of pin for contact side and PCB side can be optional, based upon customer's demands

How to order

Please fill in "X" with appropriate codes listed in the tables below.

J 0 2 0 8 1 - X N X X X G 2 B O N X

