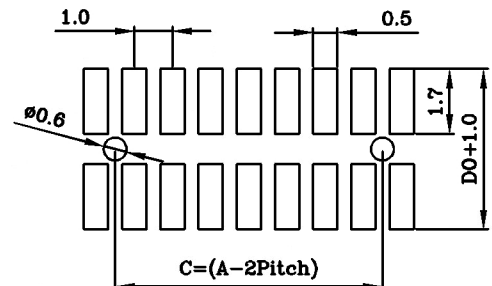
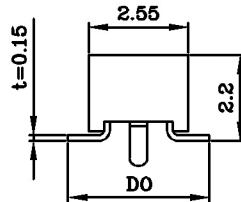
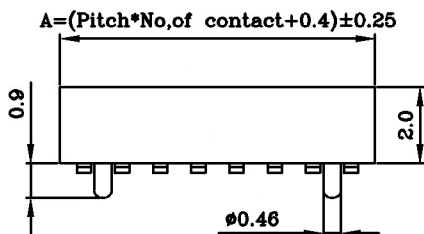
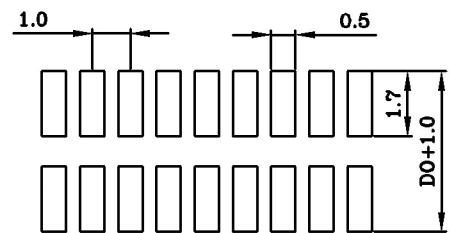
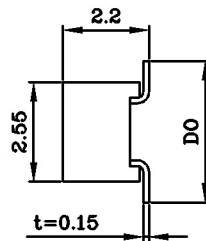
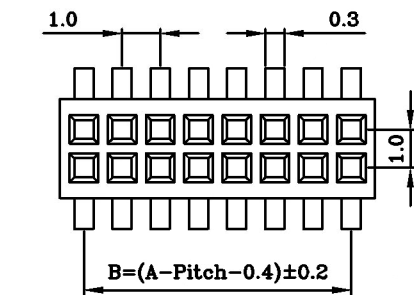


1.0x1.0mm(0.0394"x0.0394") Female Header,  
SMT Dual Row 06 to 100 Contacts

● SPECIFICATIONS ●



**Current Rating:** 0.75A@80°C ambient  
**Operating Temp Range:** -40°C to +125°C  
**Insulator Material:** NYLON-6T (UL94V-0)  
**Contact Material:** Phosphor Bronze  
**Max Processing Temp:** 260°C for 10 seconds  
**Plating:** Standard Plating G1  
**Unit:** mm  
**Unspecified Tolerance:** ±0.2



**P.C.B LAYOUT**

The length of pin for contact side and PCB side can be optional, based upon customer's demands  
 How to order Please fill in "X" with appropriate codes listed in the tables below.

J 0 6 0 8 2 - S S X X X G 1 N B X N - X

