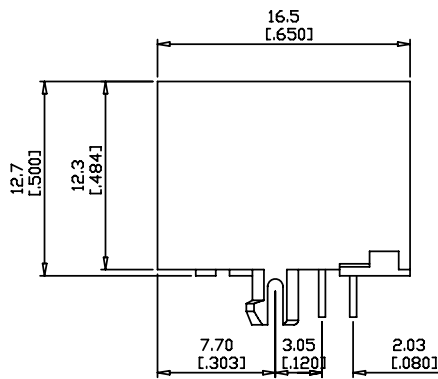
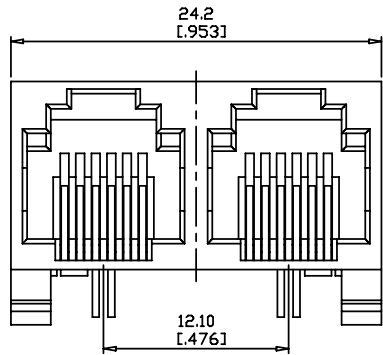


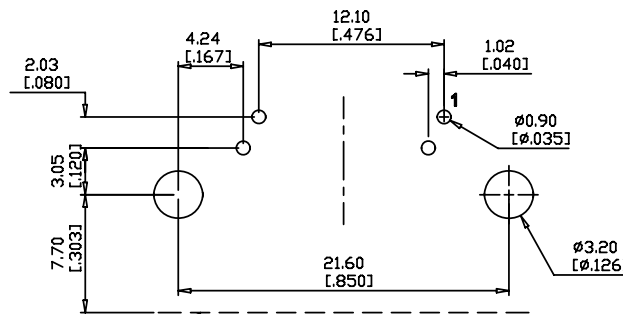
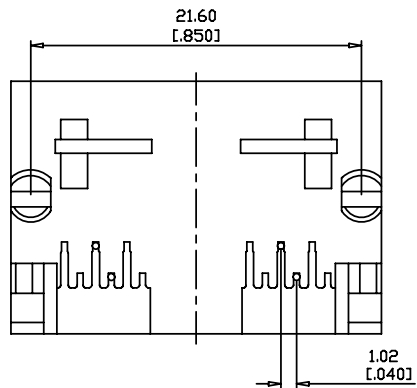
REV	DESCRIPTION	ECN NO.	DATE	DRAW	APPROV.
1	Proposal drawing		2008-02-19	Annie	Jason

ROHS COMPLIANT



Electrical Characteristics:
 Insulation Resistance: 500Mohm Min.
 Contact Resistance: 30mohm Max.
 Withstand Voltage: 1000VAC 1 minute.
 Current Rating: 1.5A
 Working temperature 0°~70°

Material:
 Housing: Thermoplastic UL94V-0
 Contact: Full Gold Plating
 Spring Wire: Dia 0.45mm Phosphor Bronze
 Optional Gold Plating Over Nickel



**SUGGESTED PCB LAYOUT
TOP VIEW**

PART NO: J1810-6 2 6 2-B x 2

Positions _____
 Contacts _____
 Housing Color _____

Ports _____
 Gold Plated _____
 0: Gold Flash
 1: 6u"
 2: 15u"
 3: 30u"
 4: 50u"

<i>JJP</i> Jen Jia Precision Technology Co., Ltd.			
TITLE	RJ11 SIDE ENTRY PCB JACK		
PART NO.	J1810-6262-Bx2	APPRD	Mark
DRAW NO.	J1810-6262-Bx2	CHKD	Steve
TOLERANCE		DRAW	Annie
0.000mmm±0.075mm		DATE	2008-02-19
0.00mm ±0.15mm		SCALE	1:1
0.0mm ±0.25mm		SHEET	1/1
THIRD ANGLE PROJECTION		REV	1
		UNIN	MM